



DEKO

DEKO 260 | Washer - Disinfector - Dryer

FRANKE

HIGH QUALITY, EFFICIENT WASHING PERFORMANCE
WITH SHORT CYCLE TIMES

DEKO 260

The Deko 260 washer-disinfector-dryer is designed and manufactured to be fully compliant with the requirements of ISO EN 15883 Parts 1 & 2. It builds on the already well proven reliability and simple operation synonymous with Franke and ensures thorough cleaning and efficient processing of reusable medical and laboratory equipment.



The design of Deko 260 means that it can be tailored to meet the individual user's requirements. It is available in single door or double door 'pass through' versions and can be configured with up to 4 sliding, removable shelves. Despite its small footprint the Deko 260 has a large capacity and can accommodate 16 DIN (240 x 255 x 50 mm) trays over the 4 levels or, alternatively, the full 485 mm chamber height can be utilized. Effective washing is ensured by the use of up to 5, easily checked, rotating wash arms coupled with a wide range of specific racks.

SPACE- SAVING CAPACITY



DIN	480x255x50 mm max. 4x2 = 8	SPRI I	450x340x70 mm max. 3x1 = 3
DIN	240x255x50 mm max. 4x4 = 16	SPRI III	250x170x70 mm max. 3x2 = 6
DIN	120x255x50 mm max. 4x8 = 32	SPRI II	340x250x70 mm max. 3x2 = 6
		SPRI III	250x170x70 mm max. 3x2 = 6
		SPRI III	250x170x70 mm max. 3x6 = 18



STATE-OF-THE-ART CONTROL

Control of the Deko 260 is by a Programmable Logic Controller (PLC) with the most advanced operating system available today. The high resolution, color TFT interface and information display panel means that the machine is simple to use.

The display provides clear and informative user and service instructions. To operate the Deko 260 simply select the appropriate pre-programmed cycle and press the button – the PLC takes care of the rest. The selected cycle, batch number, current cycle phase, chamber temperature, washing pressure and remaining cycle time are all verified and presented on the easy to read display.

Security is provided by a three tier password system that allows user, edit and service level access. The precise, electronic control of the Deko 260 saves time, energy and consumables. The PLC's process control and independent recording accuracy are compliant with the most stringent requirements of ISO EN 15883-1 & 2 for washer disinfectors.

TOUCH-SCREEN USER INTERFACE



SUSTAINABLE SOLUTIONS

The Deko 260 is designed and constructed with environmental considerations in mind. The all stainless steel frame, panels and chamber are fully recyclable. Unlike general purpose washer disinfectors the robust construction, high quality components and precise process control and verification means that the Deko 260 will give many years of reliable service even under the most demanding institutional use.

SMOOTH OPERATION

The Deko 260 provides powerful performance quietly and efficiently. The outer panels and tempered windows are heat and sound insulated. Water connections with slow closing valves and flexible hoses prevent the transfer of sound and vibration. Both the air ventilation and water pipe work provide a smooth and efficient flow of fluids.





Durability and reliability in continuous, heavy and busy institutional operation have been the key factors in the design of the Deko 260. User and Maintenance Manuals include all relevant details and instructions as required.

TRUSTED VALUE

Any information, advice, personnel training and service calls are attended to with the utmost dedication and urgency. Availability of spares is guaranteed for the minimum of 15 years after date of shipment and the complete programme and software is lodged securely with an independent body.



- Overall dim. W650xD625xH1850 mm
- Usable wash chamber dim. W510xD510xH485 mm
- Powerful 700L/min. circulation water pump
- Framework, panels and wash chamber all made of stainless steel
- Interlocking front-opening door(s) provided with insulated glass, balancing springs and safety locks
- Fully automatic PLC control including back-up batteries for full memory protection
- 3+1 cycle selection buttons (1 for scrolling),
- Mutable cycle complete buzzer
- Multi-level protection code system. Separate codes for user, maintenance and authorized person

SUMMARY OF FEATURES

- Fault and warnings information
- Fast dryer with HEPA filter
- Filter quality monitoring and change indication
- Load temperature protection and overtemperature cut-outs
- Automatic foam and washing water pressure control
- Typically between 10 – 60 minutes cycles depending on the load items and the cycle setup
- Dosing of process chemicals by means of peristaltic pumps. Flow control and optional volume measuring
- Vapor condenser
- Highest independent process verification recording level 'C'
- Integrated process verification printer (optional)
- Remaining cycle time indication

- Integrated space for process chemical containers (optional key lock door)
- Opaque cold and hot water connection hoses ½" BSP
- Drain outlet valve diameter 50 mm or an outlet pump 20 mm
- Sound and heat insulated
- Back syphon Type A air gap protection

INCLUDED AS STANDARD

- TFT Touch Screen 4,3", USB memory and Ethernet
- Dryer with HEPA –filter EU13
- Vapor condenser
- Door window(s)
- Detergent pump with flow sensor
- Low level detergent indicator
- 2 wash shelves, 3 wash arms
- Outlet valve

OPTIONS

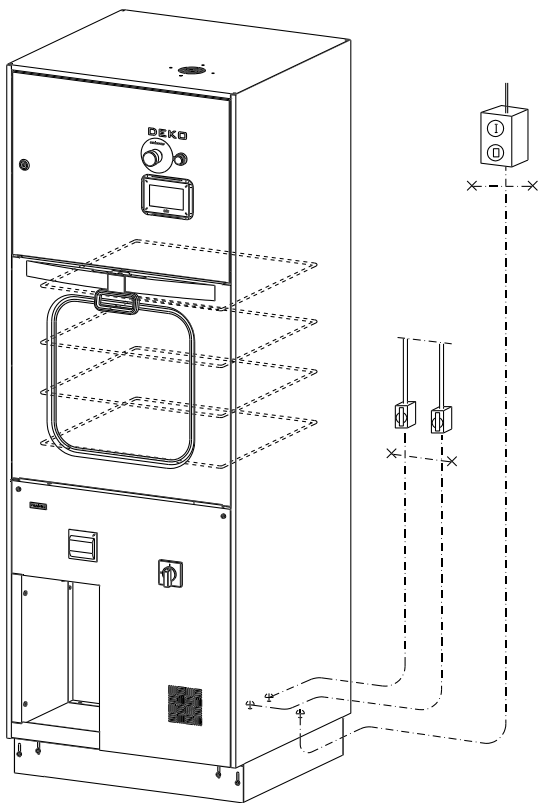
- Process printer
- Additional wash shelves incl. wash arm
- Verifying washing pressure transmitter
- Second detergent pump
- Rinse aid pump
- Pure water connection for final rinse(s)
- Outlet pump
- Emergency stop switch(-es)
- Equipped for the processing of laboratory utensils
- Excluding dryer

MODELLING:
L=laboratory
X=pass-through

EXAMPLE:
DEKO260 LX = lab pass-through model
DEKO260 = single-door incl. dryer

	(*1-door, **2-doors)
Type	DEKO 260
Outer dimensions:	
Width	650 mm
Depth	625 mm
Height	1850 mm
Weight	180 kg
Chamber dimensions	
Width	590 mm
Depth	526* / 516** mm
Height	672 mm
Gross volume	208* / 204** L
Wash level dimensions	
Width	510 mm
Depth	510 mm
Height	485 mm
DIN wash levels	max 4
SPRI wash levels	max 3
Wash arms:	
(3 as standard)	max 5

TECHNICAL DATA



Basket capacity	
Basket size	Max capacity
SPRI I, 450x340x70 mm	3+6 SPRI III
SPRI II 340x250x70 mm	6+6 SPRI III
SPRI III 250x170x70 mm	18
DIN 480x255x50 mm	8
DIN 240x255x50 mm	16
DIN 120x255x50 mm	32
Electricity	
U 400V 3N AC 50/60Hz	3x16A
U 200-240V 3PH AC 50/60Hz	3x35A
Capacity & effects	
Total power	9.4 kW
Heating power	7.5 kW
Dryer	2.8 kW
Circulation pump	1.9 kW
Pure water pump, optional	0.57 kW
Water flow, min.	0.5 L/s

Tests & approvals

ISO 14001
ISO 13485
SIS TR-3:2001
EN ISO 15883-1, 15883-2
IEC 61010-2-40
CE 0537

OVERALL DIMENSIONS AND MASS

Dimensions of machine

Machine width Mw	650 mm
Machine depth Md	625 mm
Machine height Mh	1850 mm
Loading height above floor Lh	820 mm

Mass

Weight with drying unit	180 kg
Weight without drying unit	170 kg

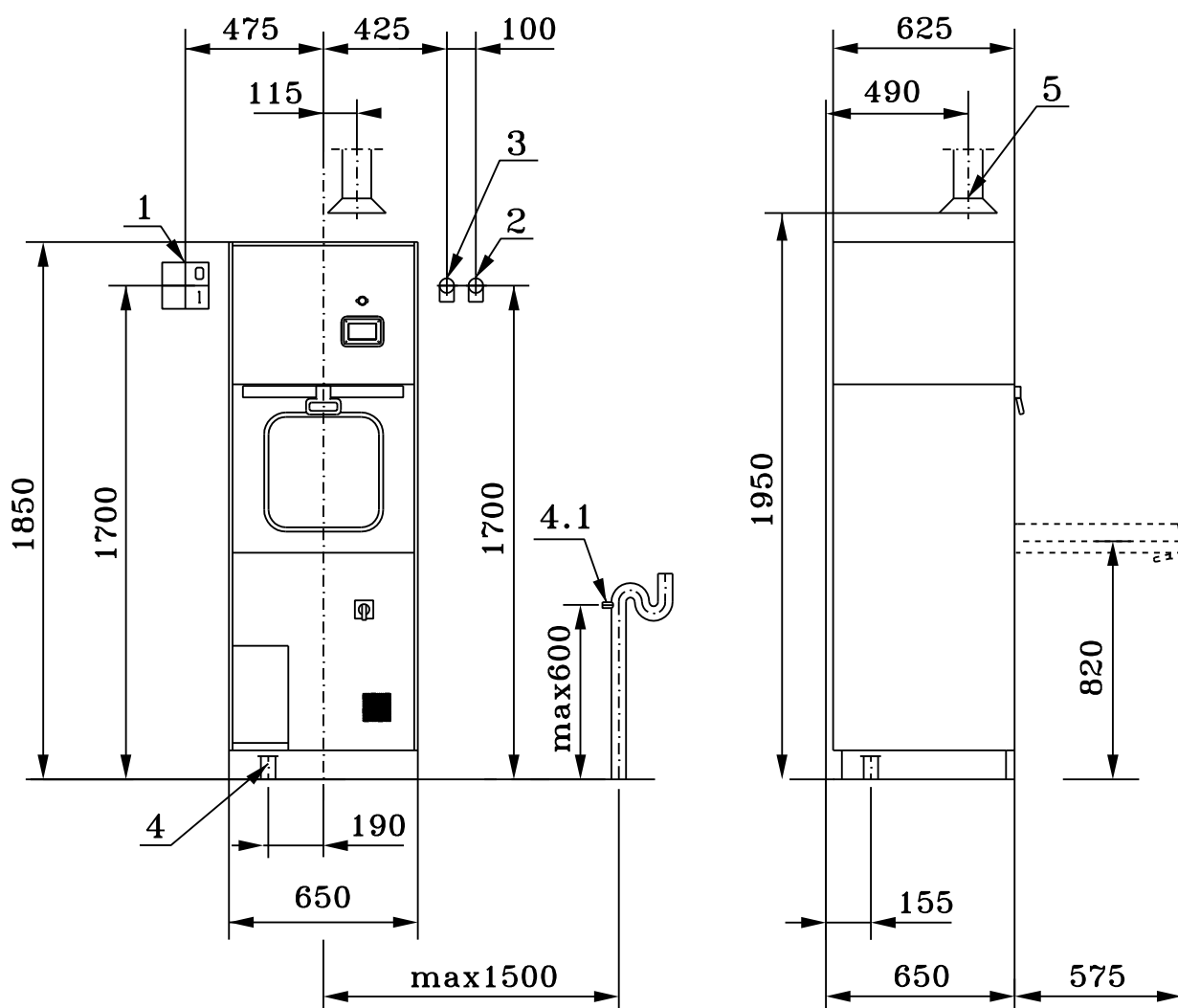
Floor loading	0.04 kN./cm ²
---------------	--------------------------



1. Circuit breaker (supplied by the buyer)
2. Cold water G1/2" (female), shut off valve (supplied by the buyer)
3. Warm water G1/2" (female), shut off valve (supplied by the buyer)
4. Drain outlet NS dia 50 mm (or 20 mm with outlet pump, option)
 - 4.1 Alternative drain outlet dia 20 mm with outlet pump (option)
5. Exhaust duct dia 60 mm

INSTALLATION

SINGLE DOOR MODEL



650 mm + 40 mm, height: 1900 mm.

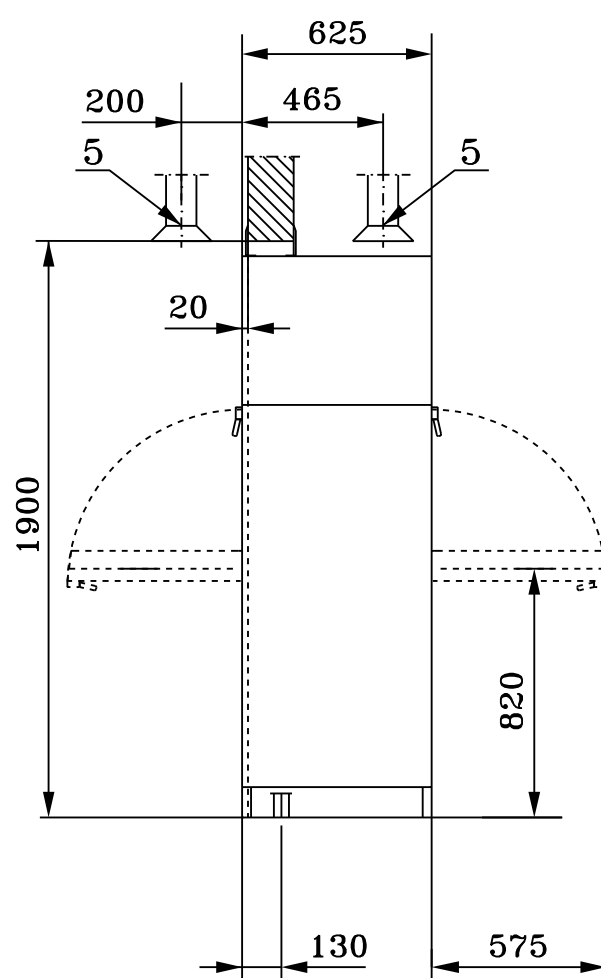
Technical drawing of a vertical machine, likely a vending machine or a specialized storage unit, showing dimensions and components.

Dimensions:

- Overall height: 1850
- Height to top of main compartment: 1700
- Height to top of lower compartment: 1700
- Height to top of lower compartment (max): max600
- Overall width: 650
- Width of main compartment: 190
- Width of lower compartment: 190
- Width of top section (left): 525
- Width of top section (right): 525
- Width of top section (far right): 100
- Width of lower compartment (max): max1500

Labels and Components:

- 1: Top left corner/door handle area.
- 2: Top right corner/door handle area.
- 3: Top right corner/door handle area.
- 4: Bottom left corner/door handle area.
- 4.1: Bottom right corner/door handle area.
- 0, 1: Top left corner/door handle area.
- 115: Top center section.
- Φ: Symbol for diameter or hole.
- max600: Maximum height of lower compartment.
- max1500: Maximum width of lower compartment.



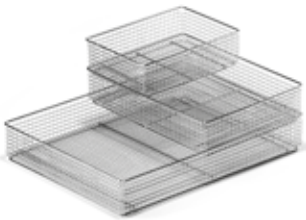
Instruments and equipment



381 170
Utensil basket
incl. lid
340 x 250 x 200 mm



381 684
Rack for Speculas
- incl. tray 381210



381 200
Instrument wire tray 1/1
450 x 340 x 70 mm



381 685
Holder for 6 kidney dishes

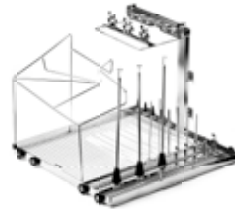
381 201
Lid 450 x 340 mm

381 210
Instrument wire tray 1/2
340 x 250 x 70 mm

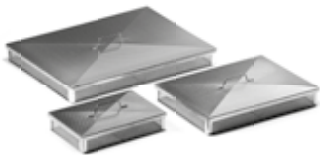
381 211
Lid 340 x 250 mm

381 220
Instrument wire tray 1/4
250 x 170 x 70 mm

381 221
Lid 250 x 170 mm



381 316 C
Rack for AN equipment
- long hoses



381 202
Fine mesh tray
430 x 320 x 50 mm



381 421 C
Rack for
anaesthetic
equipment

381 203
Lid
430 x 320 mm

381 212
Fine mesh tray
320 x 230 x 50 mm

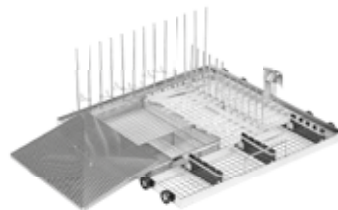
381 213
Lid
320 x 230 mm

381 222
Fine mesh tray
230 x 150 x 50 mm

381 223
Lid
230 x 150 mm



381 209
Tray for 6 Opto
instruments
• incl. tray 381210



381 341 C
Rack for rigid scopes
• incl. fine mesh tray 381212
and lid 381213

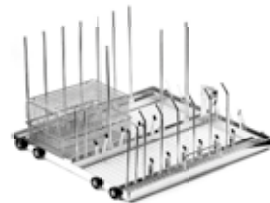


381 300
Deko 1/2 universal basket
440 x 290 x 180 mm

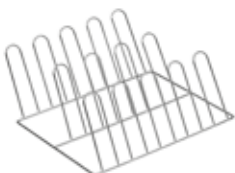


381 345 C
Rack for laparoscopes
• incl. trays 381210, 381212
and lids 381211 ja 381213

381 301
Divider



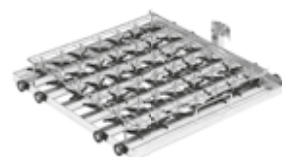
381 351 C
Rack for Bird hoses
• incl. 2 pcs trays 381220



381 441
Shoe rack
14 holders



381 383 C
Oras-bidee shower hand-
les & hose rack
• For 6 pcs
handles & hoses



381 366 C
Rack for milk bottle
nipples, incl. lid
• spray tubes 42 pcs,
H 50mm



381 371 C
Insert for optical
equipment

N11 934 8
Replacement filter
for 381371C



381 688 C
Insert for
lumen instruments

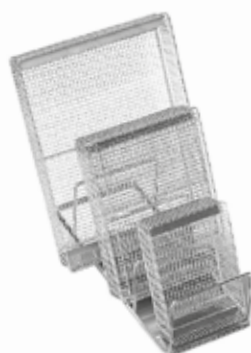


381 420 C
MIS-rack



381 426 C
Insert for suction
hoses

Dental equipment



381 205
Instrument tray 1/1
with closed plates
450 x 340 x 70 mm,

381 201
Lid 450 x 340 mm

381 215
Instrument tray 1/2
with closed plates
340 x 250 x 70 mm,

381 211
Lid 340 x 250 mm

381 225
Instrument tray 1/4
with closed plates
250 x 170 x 70 mm

381 221
Lid 250 x 170 mm

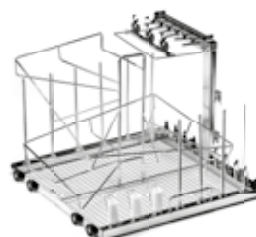
381 216
Holder for 3 instrument trays



381 227
Carrier for dental
30 angle pieces,
250 x 170 x 70 mm
• only for outer
processing



381 396 C
Rack for
dental hoses



381 398 C
Rack for hoses



381 217
Insert for mirrors
• incl. tray 381219,
250 x 170 x 70 mm



381 677
Dental tray rack
1/1 for base wash level
- for 20 trays

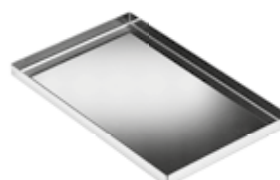


381 676
Dental tray rack
1/2 for base wash level
- for 10 trays



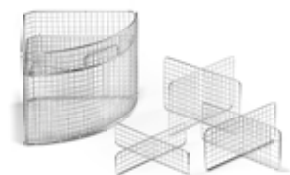
381 230
Small fine mesh box & lid,
90 x 90 x 40 mm

381 235
Instrument tray
250 x 100 x 70 mm



381 640
Solid st/st tray
280 x 180 x 16 mm

Laboratory



381 500

Sector basket for test tubes, H 135 mm

381 501

Lid for sector baskets

381 502

Divider grid, H 50

381 503

Divider grid, H 90

381 503

Divider grid, H 125

381 503

Divider grid, H 180

381 510

Sector basket for test tubes, H 210 mm



381 515

Peg rack
12 compartments



381 520

Peg rack
H 150 mm, 72 pegs

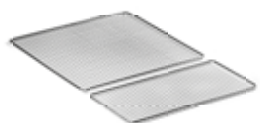


381 530

Peg rack
H 250 mm, 26 pegs

381 535

Pressure lid, diam. 520 mm
• for peg racks 381520 and 381530

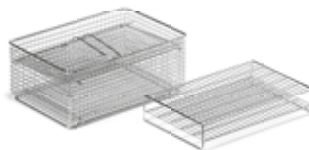


381 677

Pressure lid, 1/1,
500 x 500 mm

381 576

Pressure lid 1/2,
500 x 250 mm



381 540

Basket for microscope slides,
incl. lid - 120 compartment
compartments 26 x 8 mm

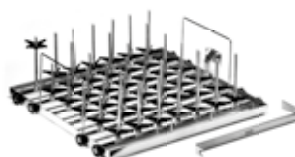
- incl. tray 381219,
250 x 170 x 100 mm
and lid 381221



381 550

Compartment for culture
dishes - 48 pcs

- compartments
102x16mm



381 566

Bottle washing rack,
incl. support stars

- 42 jet tubes with spray holes
also at sides
- 21 pcs diam 8 mm,
H 150 mm
- 21 pcs diam 6 mm,
H 100 mm
- Changeable tubes



381 725

Tension key for spray tubes

381 578 C

Pipette washing trolley



389 000 B

Customised bottle washing
racks made to order as per
given bottle dimensions

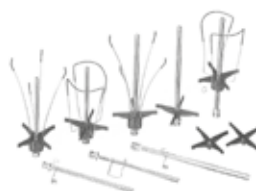
Bottles



381 602 C
Bottle washing rack for 150 g bottles

381 607 C
Bottle washing rack for 250 g bottles

381 612 C
Bottle washing rack for 500 g bottles



N23 658
Bottle holder for diam. 8 mm tube

N23 659
Bottle holder for diam. 6 mm tube

N23 674
Bottle holder for diam. 4 mm tube

N24 365
Bottle support tulip for diam.
6 or 8 mm tube

N24 366
Height adjustment spring
diam. 8 mm

N24 435
Height adjustment spring
diam. 6 mm

N24 436
Height adjustment spring
diam. 4 mm

381 556
Bottle support with 4 pegs
for 4 mm tube, H 120 mm

381 557
Bottle support with 4 pegs
for 6 mm tube, H 120 mm

381 558
Bottle support with 4 pegs
for 8 mm tube, H 180 mm



381 600
Carrier for
150 g bottles

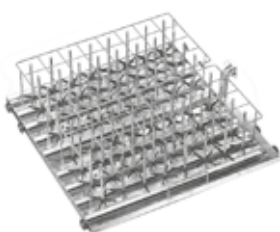
381 601
Lid for 381600

381 605
Carrier for
250 g bottles

381 606
Lid for 381605

381 610
Carrier for
500 g bottles

381 611
Lid for 381610



381 604 C
Bottle washing rack with
compartments, support
stars. Tailor-made per
specific dimensions



Jet tubes with top and
side spray holes

N26 060 D
Plug for closing a
jet tube connection

PV1 081 37
Shell with silicone membrane 3/4
- incl. N66763 stand, N66764 cap
and NP66891 membrane

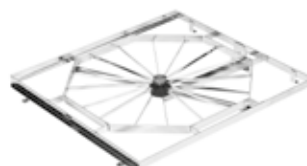
PV1 055 22
Shell with silicone membrane 7/8
- incl. N66765 stand, N66766 cap
and NP66891 membrane

381 320
Test and cleaning con-
nector for jet racks

Wash levels



374 073 A
Instrument middle shelf,
incl. wash arm



374 078 A
Lab middle shelf, incl. lab
wash arm



Franke Medical Oy
Vartiokuja 1
76850 Naarajärvi
Finland

Tel. +358 15 34 111

www.frankemedical.fi

www.dekorange.com

Email: ws-medical.fi@franke.com

